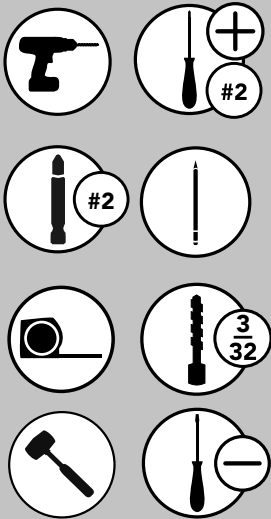


INSTALLATION INSTRUCTIONS

WOOD PANTRY PULLOUT

TOOLS REQUIRED:



ESTIMATED ASSEMBLY TIME:

45 MIN

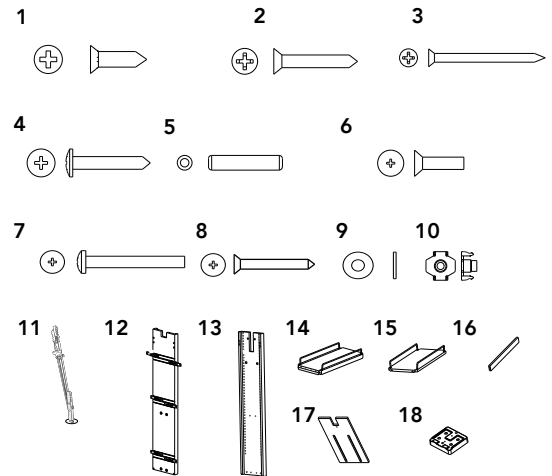
CARE AND MAINTENANCE:

Clean with a damp cloth and wipe parts dry.

SCAN HERE FOR INSTALLATION VIDEO

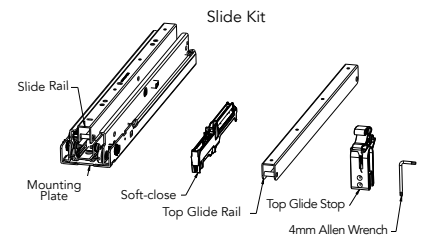


WWW.REV-A-SHELF.COM/
VIDEOS



Parts List		
No.	Description	Qty
1	#6 x 1/2 Flat Head Wood Screws	6
2	#8 x 1 Deep Thread Flat Head Screws	12
3	#8 x 2 Wood Screws	12
4	#8 x 1 Pan Head Screws	8
5	6mm Wood Dowel	12
6	1/4-20 x 1 Flat Head Machine Screw	2
7	1/4-20 x 2 Pan Head Machine Screw	2
8	#8 x 1-1/2" Flat Head Screws	10
9	#8 Flat Washer	8
10	1/4-20 Tapered Barrel Nut	2
11	Snap Toggles	2
12	Front Panel	1
13	Back Panel	1
14	Bottom Shelf Assembly	1
15	Adjustable Shelf Assembly	4,5,6*
16	Top Rail	2
17	Floating Back Plate	1
18	Pantry Feet	2

* Dependent on unit purchased

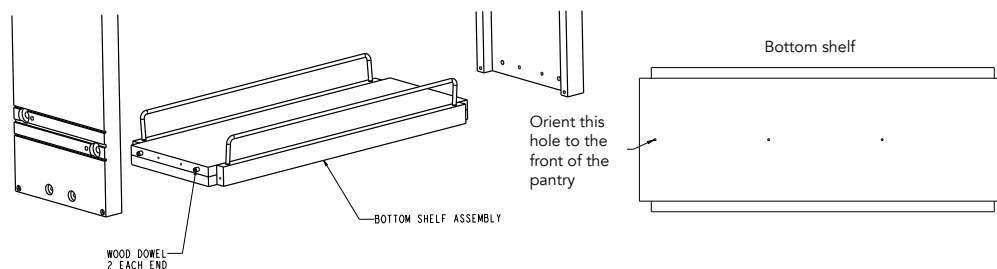


ASSEMBLY STEP 1

Install the the bottom shelf with the (3) pilot holes located toward the front of the pantry, then insert (4) dowels into the bottom shelf assembly (See Fig. 1).



FIG. 1

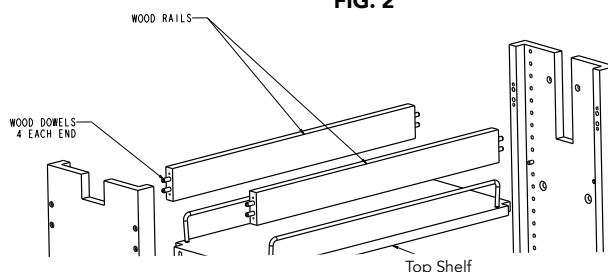


STEP 2

Install the top shelf, then install the wood rails using (8) dowels (See Fig. 2).



FIG. 2



STEP 3

Attach the front and back panels using (12) #8 x 2 wood screws with (4) #8 flat washers and (4) #8 x 1 pan head wood screws with washers (See Fig. 3).

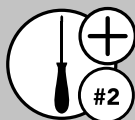
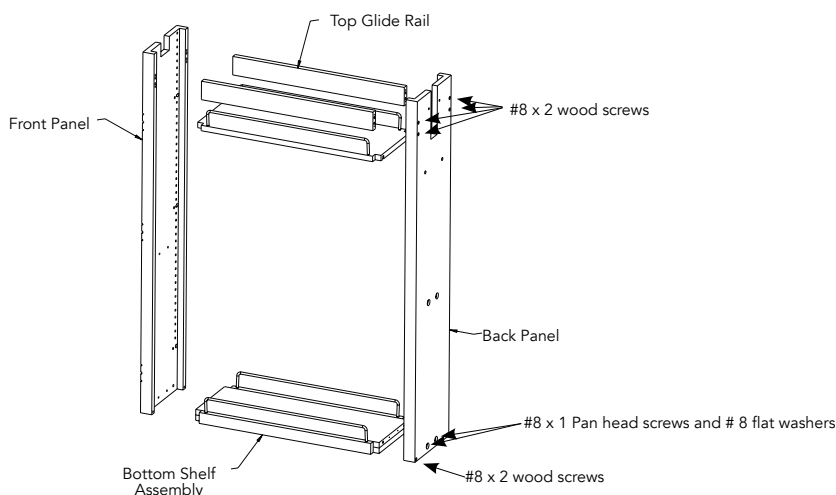


FIG. 3



STEP 4

Attach the floating back plate to the pantry's rear while ensuring it is in its lowest position. Insert the tapered barrel nuts (5" pantry will only require a single barrel nut) into the slot of the floating back plate and secure it through the front of the back panel with (1) or (2)* 1/4-20 x 1 flat head machine screws (See Fig. 4A and 4B).

*Dependent on unit purchased.

Note: The barrel nuts should float freely in the slot (See Fig. 4C).



FIG. 4A

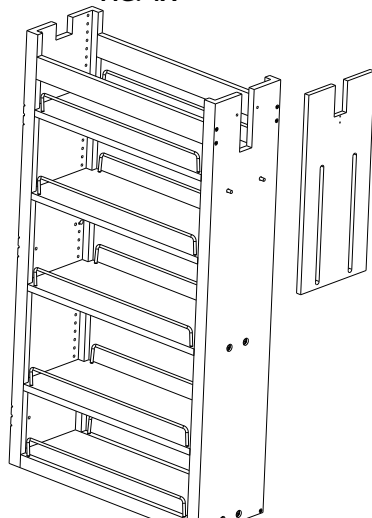


FIG. 4B

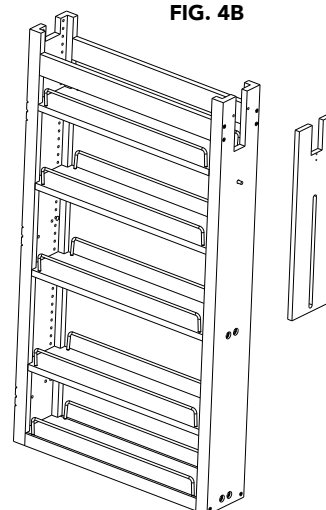
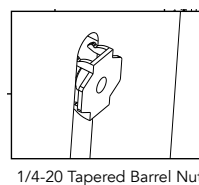


FIG. 4C



STEP 5

Insert Shelves - Install the shelves by adjusting the metal shelf pins to the desired location. To install the shelves, begin by inserting the side with pre-drilled holes into dowels and pushing the other side down into place (See Fig. 5).

Note: To strengthen the frame, there are pre-drilled holes to affix the middle shelf. Install the shelf into the middle location and secure it with (4) #8 flat washers and (4) #8 x 1" pan head screws (this step is optional but recommended).

FIG. 5

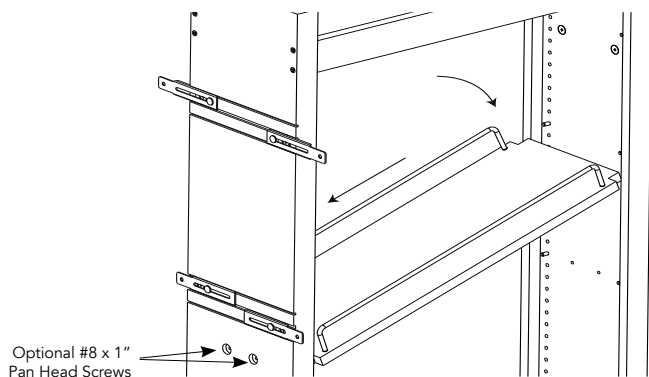


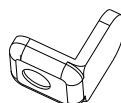
FIG. 6

INSTALLATION STEP 1

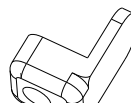
Using the information and measurements provided, identify the height of your pantry and mark, drill, and install the rub bushings (See Fig 6).



Pantry Height <i>despensa de altura</i> <i>hauteur de garde-manger</i>	Rub Bushing Screw Location From Bottom of Cabinet Opening <i>frote ubicación casquillo del tornillo de la parte inferior de la abertura del gabinete</i> <i>frotter emplacement de la vis de douille bas de l'ouverture du Cabinet</i>
43	40 inches (1016 mm)
51	47.5 inches (1207 mm)
58	55 inches (1397 mm)



1-3/4" Face Frame
44 mm marco de la cara
44 mm cadre de la façade



1-1/2" Face Frame
38 mm marco de la cara
38 mm cadre de la façade

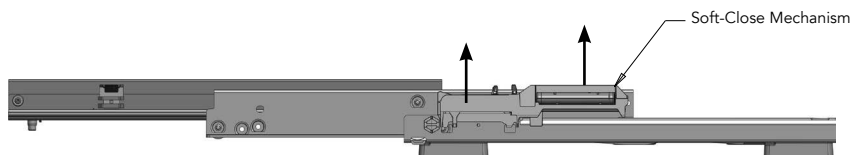


Adjustable Rub Bushing Kit

STEP 2

Remove the soft-close mechanism by lifting it from the back and tilting slightly (See Fig 7).

FIG. 7

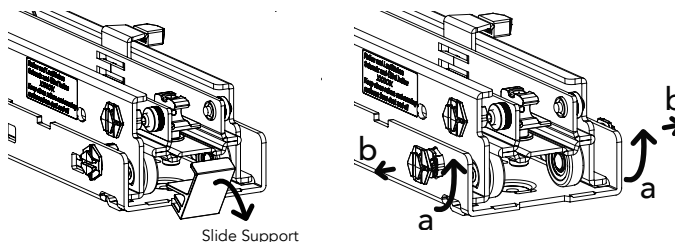


STEP 3

Prepare the bottom slide by disengaging the slide support from the mounting plate and removing the (3) grey caps from the slide with a flathead screwdriver by turning a quarter turn and set aside for later during the installation process (See Fig 8).



FIG. 8

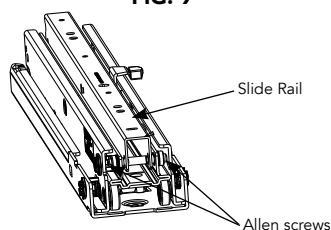


Slide Support

STEP 4

Using the provided allen wrench, loosen the screws to allow ease of adjustment later in the installation (See Fig 9).

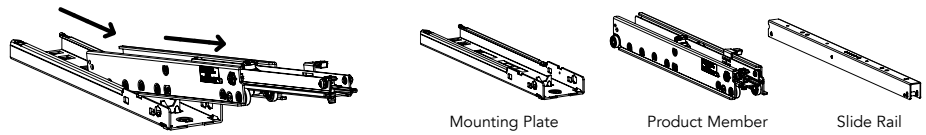
FIG. 9



STEP 5

Remove the product member and the slide rail from the mounting plate (See Fig. 10).

FIG. 10



STEP 6

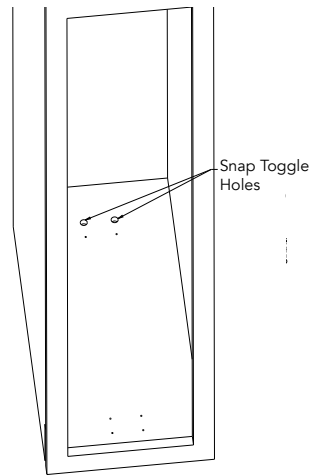
Utilizing the provided template and floor thickness notes below, mark the (6) screw location holes and (2) toggle holes (See Fig. 11).

Notes:

If cabinet FLOOR thickness is LESS than 1-1/2", drill back (2) holes with 1/2" drill bit and the remaining (6) holes with 9/64" drill bit.

For cabinet FLOOR thickness GREATER than 1-1/2", use a 9/64" drill bit and drill all (8) hole locations.

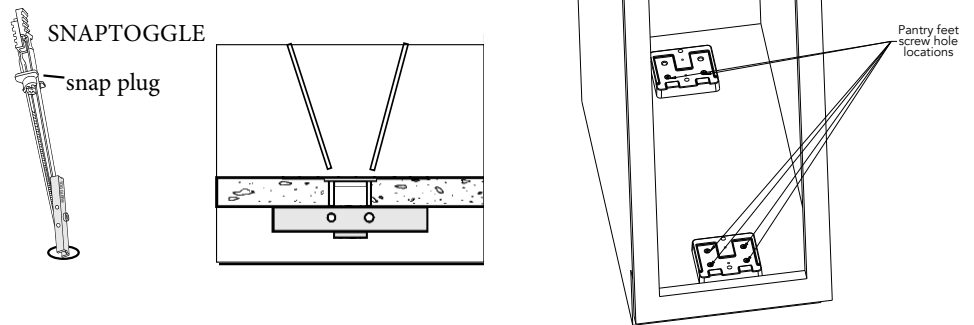
FIG. 11



STEP 7

Attach the rear foot using (2) #8 x 1-1/2" flat head screws and (2) toggle bolts by inserting the "Snap Toggle" into the back (2) holes and sliding the plastic snap plug down into the hole and breaking off excess plastic legs. Then secure the front foot with (4) #8 x 1-1/2" flat head screws (See Fig. 12).

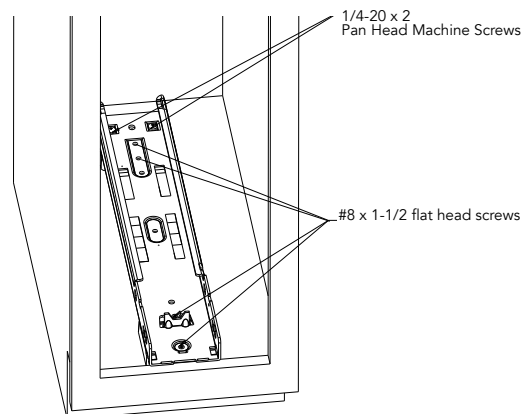
FIG. 12



STEP 8

Secure the mounting plate to the feet starting from the back by inserting (2) 1/4-20 x 2 pan head machine screws into snap toggles and (4) #8 x 1-1/2" deep thread screws into the remaining holes (See Fig. 13).

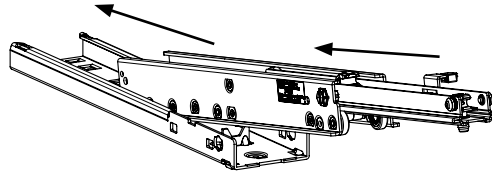
FIG. 13



STEP 9

Reattach the product member to the mounting plate (See Fig. 15).

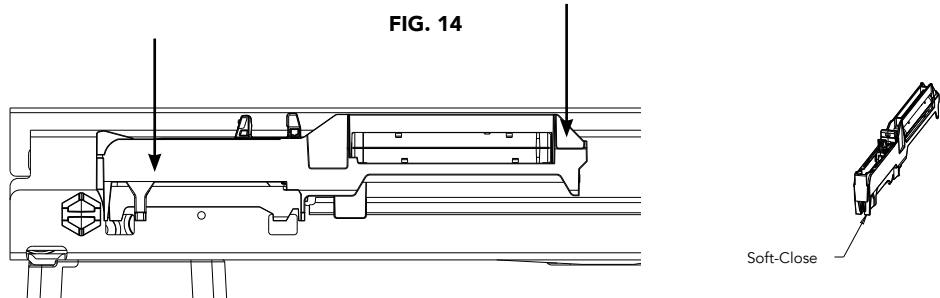
FIG. 15



STEP 10

Attach the soft-close slide attachment to the mounting plate (See Fig. 14).

FIG. 14

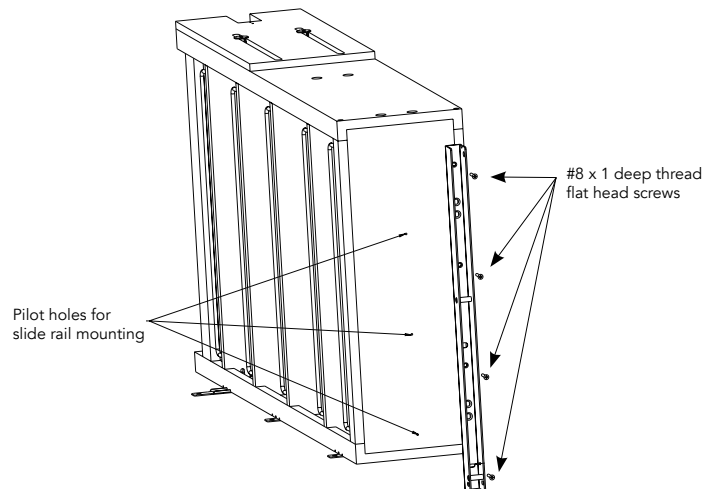


STEP 11

Lay the pantry on its front with the door mount brackets to the floor and position the slide rail over the (3) pilot holes with the slot to the front of the pantry and attach it to the bottom of the pantry using (4) #8 X 1 deep thread flat head Screws and set pantry aside (See Fig. 16).

Note: Front cross bars of slide rail will face the front of the cabinet.

FIG. 16



STEP 12

Use the template to mark, pre-drill the hole locations and install the glide rail using (4) #8 x 1" deep thread flat head screws (See Fig. 17A).

Note: Face Frame cabinets will require a "spacer" (not included) as the track needs to be flush with face frame (See Fig. 17B).

FIG. 17A

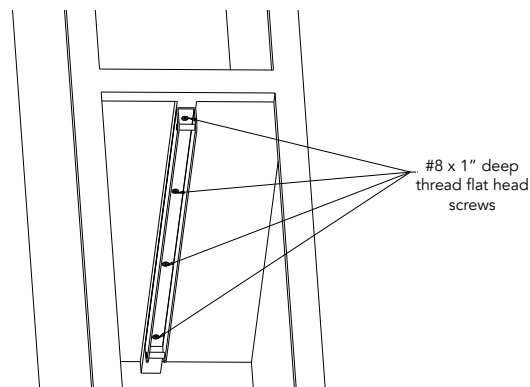
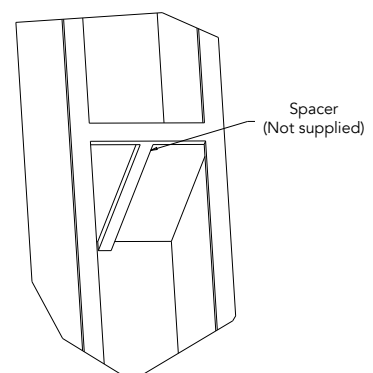


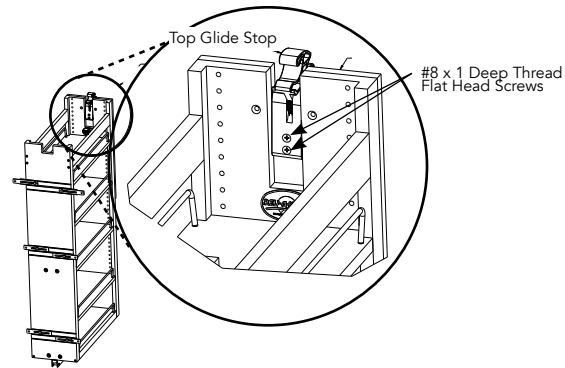
FIG. 17B



STEP 13

With the pantry standing up, attach the top glide stop to the top of the floating back plate, using (2) #8 x 1 deep thread flat head screws in pre-drilled locations (See Fig. 18).

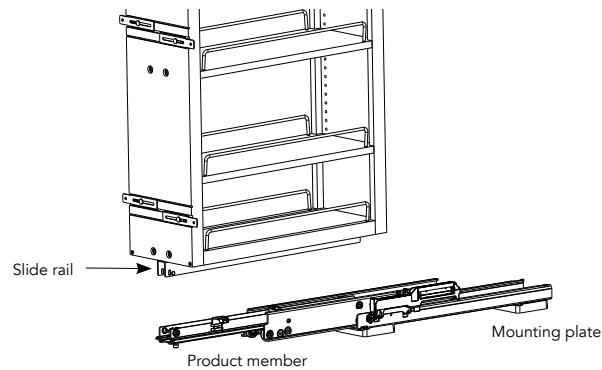
FIG. 18



STEP 14

The pantry is now ready to be inserted into the cabinet. You will need to lift the pantry and set the slide rail onto the product member, and push the pantry into the cabinet to engage the slide (See Fig. 19).

FIG. 19

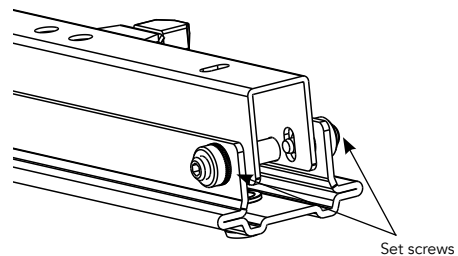


STEP 15

Carefully slide the pantry out of the cabinet and secure the slide rail to the product member. Using an allen wrench, tighten the allen screws that were loosened in step 3, making sure that the set screws go through the slotted holes in the front of the slide rail (See Fig. 20).

Note: These set screws also adjust the pantry left to right in the cabinet.

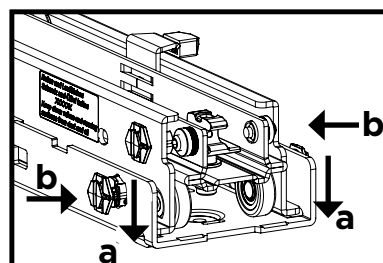
FIG. 20



STEP 16

Reinstall the (3) grey caps removed in Step 2 (See Fig. 21).

FIG. 21

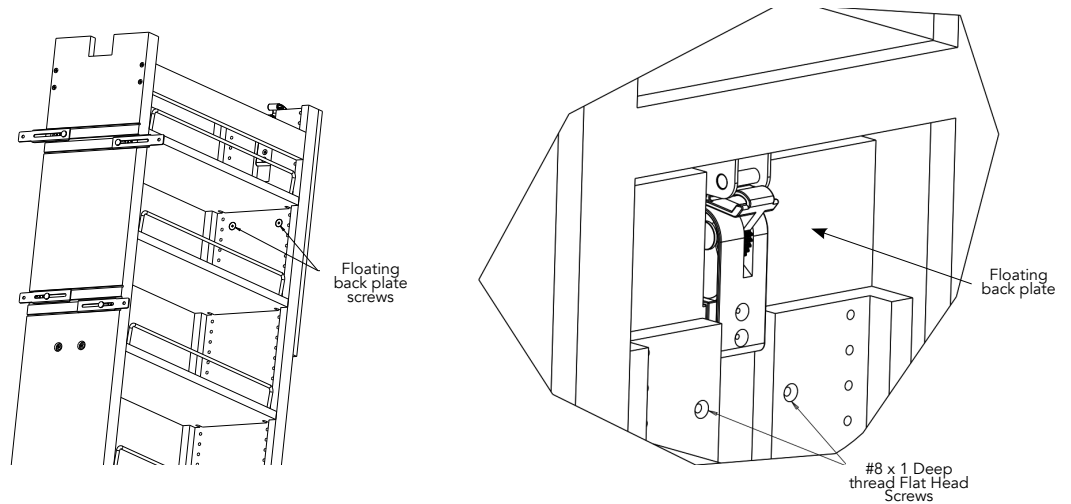


STEP 17

Loosen the floating back plate screws just enough to raise it until the top glide stop is in the top glide rail (it should rest within the rail but not touch the top of it), then retighten the floating back plate and open and close the pantry to ensure proper function. After floating back plate is in desired position, secure it using (2) #8 x 1 deep thread flat head (See Fig. 22).

Note: Do NOT over-loosen the floating back plate screws - it will cause the tapered barrel nuts to fall behind the pantry, and you will have to uninstall the pantry to gain access.

FIG. 22

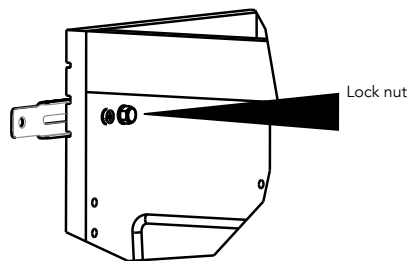


STEP 18

On the front of the pantry loosen lock nut to position the door mount brackets to the desired locations (See Fig 23).

(Note: you will want to ensure that the brackets mount into the thick portion of the cabinet door.

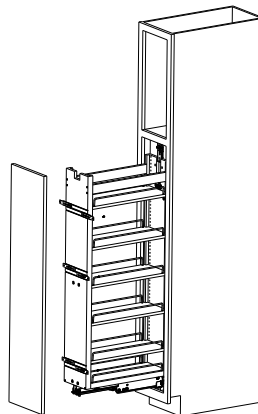
FIG. 23



STEP 19

Measure hole locations and transfer to the cabinet door. Attach the door with (6) #6 x 1/2 wood screws (See Fig 24).

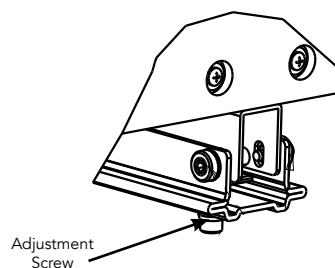
FIG. 24



STEP 20

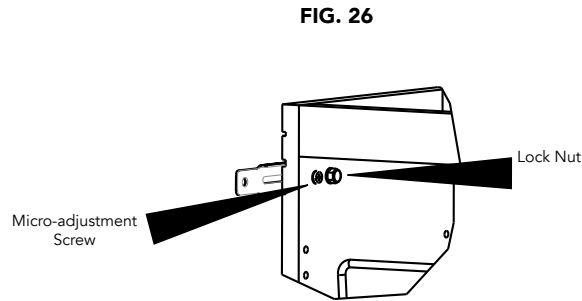
To adjust the door tilt loosen or tighten the adjustment screw located on the underside of the slide (See Fig. 25).

FIG. 25



STEP 21

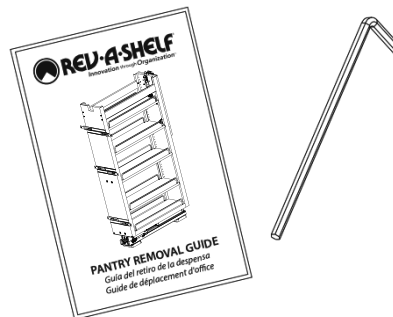
Adjust the door left or right and tighten the lock nut when complete. Use the micro-adjustment screw for further pitch adjustment if needed (See Fig. 26).



STEP 22

Place the plastic sleeve with the allen wrench and the Pantry Removal Guide into the desired location.

Note: This is important to retain if the unit ever needs to be removed (See Fig. 27).



STEP 23

Note: If the installed unit is to be transported, use the included plastic shelf clips to lock down the adjustable shelves. To use these clips, insert the clip with the flat side on the bottom between the panel and the shelf (on slotted side of the shelf) then bend and press the clip into the hole. Remove after final installation (See Fig. 28).

