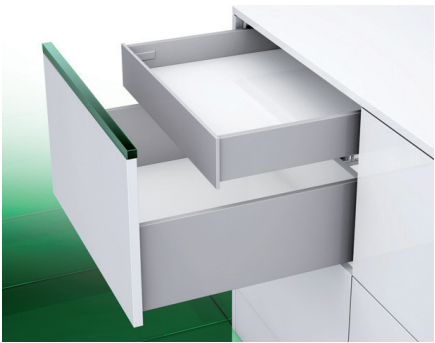


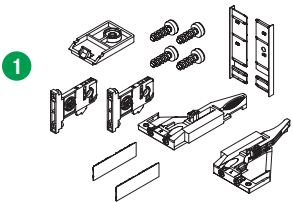
Vionaro H89 Inset Drawer System

Inset front panel and accessory set



- Color-coordinated aluminum front panel profile
- 89mm (3 1/2") side height
- Cubist design with 90° angles
- Slimline 13mm (1/2") side width
- Bottom panel is cut to size without notching

Vionaro H89 Inset Drawer and Accessory Set



Description	Item No. White	Item No. Graphite	PU
H89 Inset Drawer Accessory Set	F136100279517	F136100278517	50

Accessory set consists of:

- 1a

2 - Cover Caps
- 1b

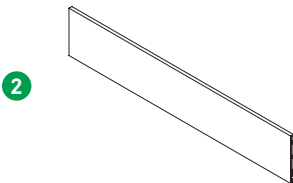
1 - Front Locking Device Set, left/right
- 1c

2 - Front Connectors
- 1d

4 - Front Connector Screws
- 1e

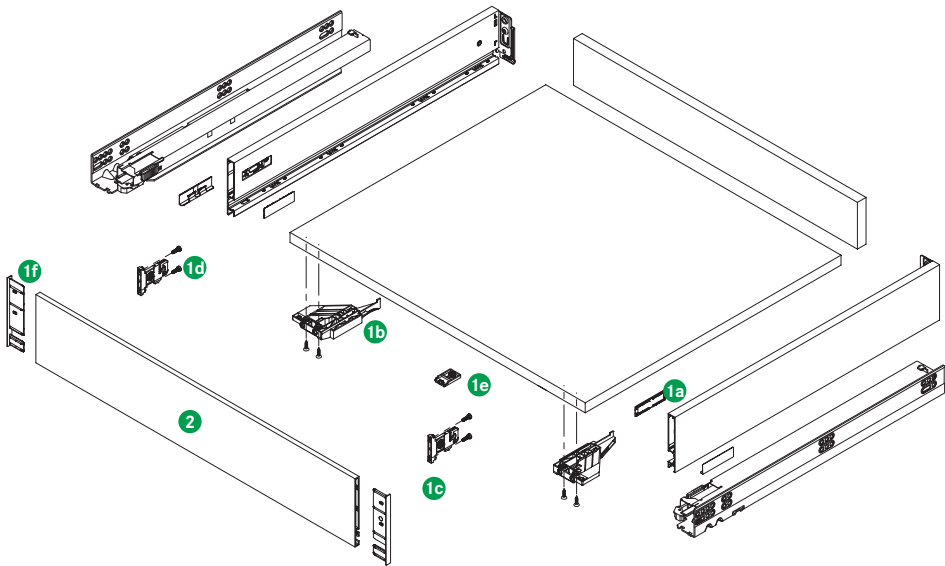
1 - Front Bottom Connector
- 1f

2 - End caps



Description/Length	Item No. White	Item No. Graphite	PU
H89 Inset Front Panel			
1160 (45 11/16")	F136120569507	F136120538507	10

H89 inset front panels can be cut to length. One side is pre-drilled and a drilling template is provided for the other side for accurate installation. Assembly instructions for the accessory set are included with each panel.

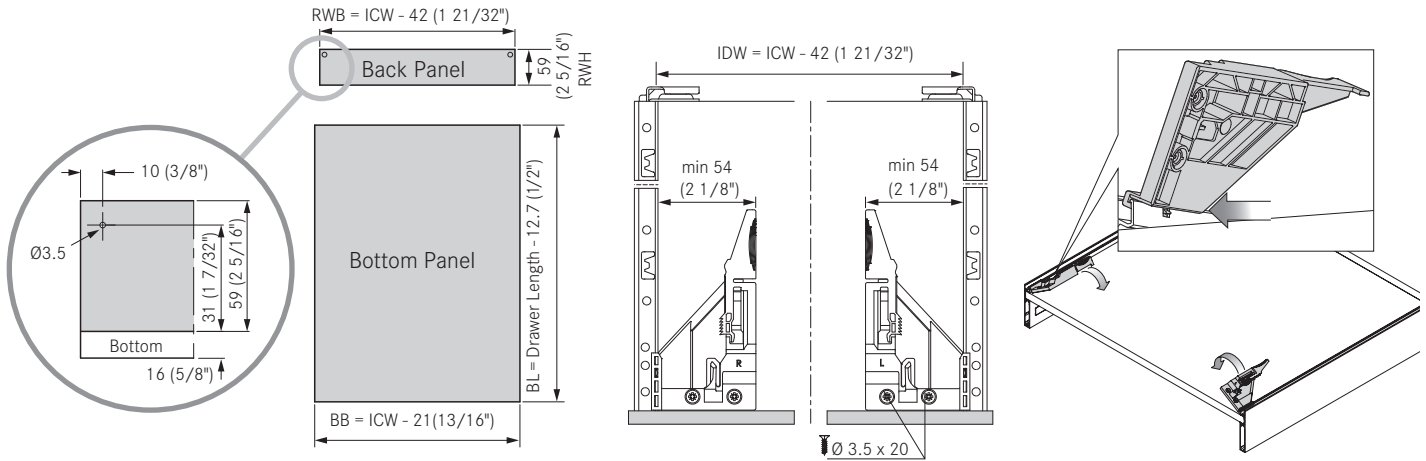


PU - Packaging unit

Drawer height	89mm (3 1/2")
Standard Dynamic Load	100 lb (45 kg)
HD Dynamic Load	132 lb (60 kg)
Static Load Standard/HD	100 lb (45 kg)/150 lb (70 kg)

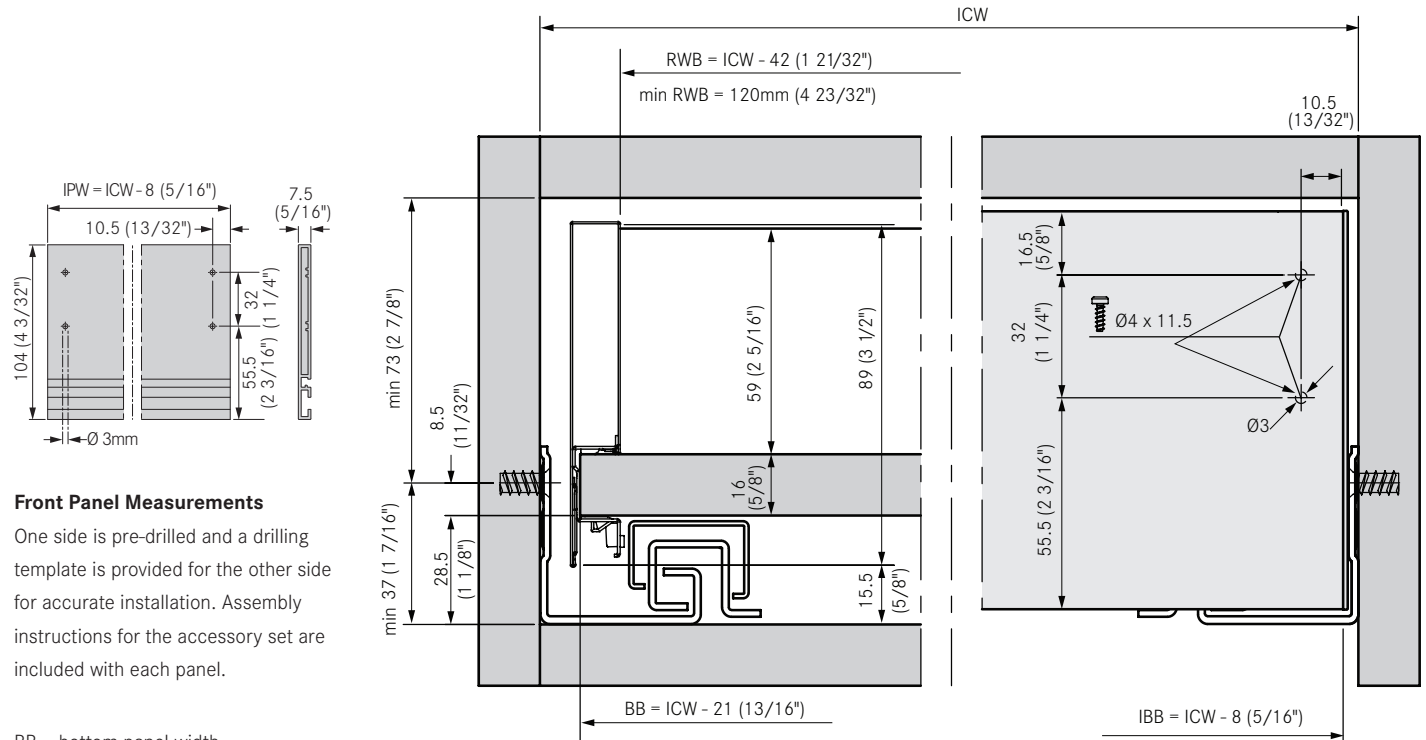
Inset Drawer Back and Bottom Measurements

Front Locking Device Position and Installation



Front Panel Measurements

Drawer Measurements



Front Panel Measurements

One side is pre-drilled and a drilling template is provided for the other side for accurate installation. Assembly instructions for the accessory set are included with each panel.

BB = bottom panel width

BL = bottom panel length

IBB = inset front panel width

ICW = inside cabinet width

IDW = inside drawer width

IPW = inside panel width

RWB = back panel width

RWH = back panel height